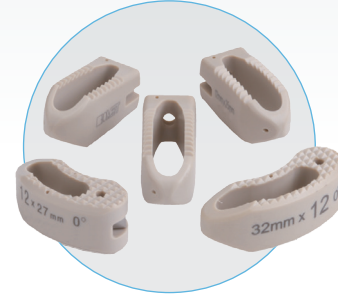


## A Complete Solution from ZimVie Spine

ZimVie offers a complete line of solutions to enable you to facilitate successful fusion procedures.

Additional solutions include:



### INTERBODY

#### Zyston® Curve/Straight Interbody Spacer System

Curve/Straight: Robust implant/insert interface provides for secure tactile control

- **Curve/Straight:** Clear visualization and markers provide confidence and confirmation of placement which are available in curved and straight with multiple length options
- **Curve:** Controlled articulating mechanism provides variable and fixed angulation
- **Curve:** Inserter's controlled articulating mechanism allows up to 55 degrees of angulation



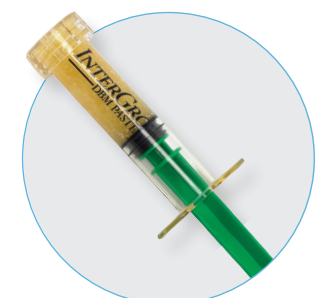
#### ProLift® Expandable Spacer System

- Controlled in situ expansion restores disc and foramen height
- Post pack design simplifies graft delivery after expansion
- Surface treated with 400-600 micron porosity

### BIOLOGICS

#### PrimaGen Advanced™ Allograft

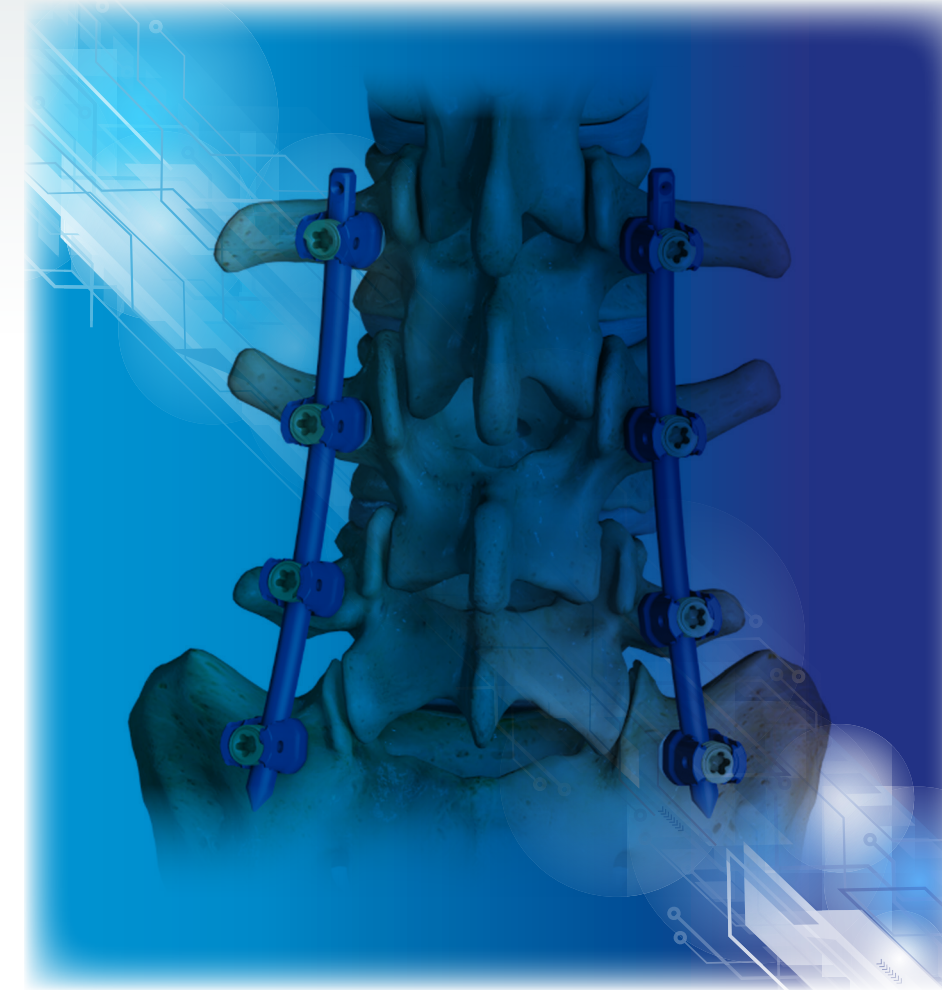
- An Allograft solution containing all three properties of the bone healing triad:
  - Osteoconduction
  - Osteoinduction
  - Osteogenicity
- PrimaGen Advanced Allograft contains at least 750,000 cells/cc of cancellous tissue with at least 70% cell viability.
- Packaged in pre-filled syringe with a fiber based bone matrix for convenience and improved handling



#### InterGro® DBM

- InterGro DBM is a verified, osteoinductive and demineralized bone matrix in a natural lecithin carrier, and is available as:
  - DBM Putty - 40% DBM content by weight
  - DBM Paste - 35% DBM content by weight
  - DBM Plus - 35% DBM content by weight and premixed with resorbable coralline hydroxyapatite/calcium carbonate granules

## Changing the game in MIS TL Fixation



For more information, visit [ZimVie.com](http://ZimVie.com)

ZimVie Spine  
10225 Westmoor Drive  
Westminster, CO 80021  
[www.ZimVie.com](http://www.ZimVie.com)

**ZimVie**  
Restoring Daily Life.®

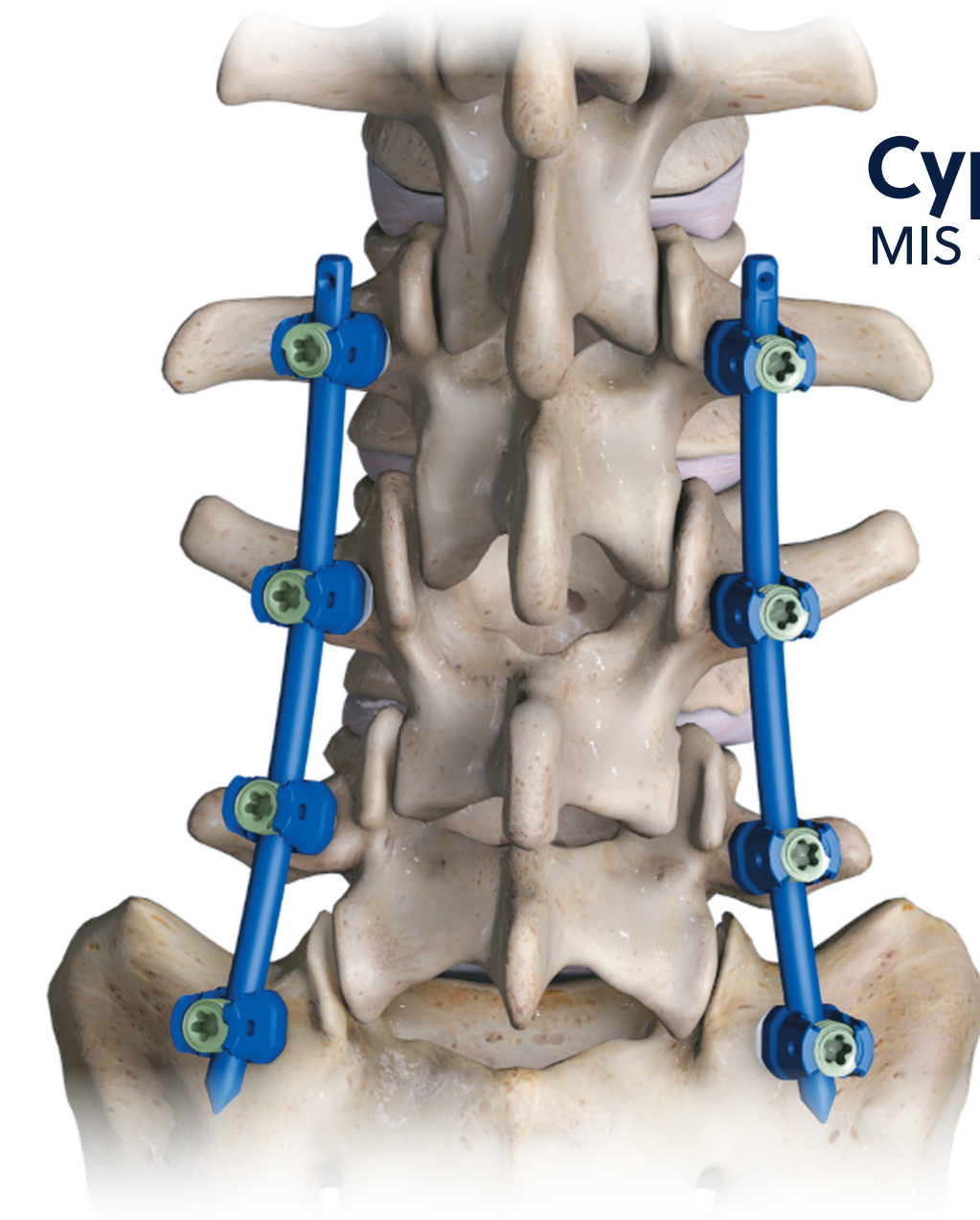
**Disclaimer:** This document is intended exclusively for physicians and is not intended for laypersons. Information on the products and procedures contained in this document is of a general nature and does not represent and does not constitute medical advice or recommendations. Because this information does not purport to constitute any diagnostic or therapeutic statement with regard to any individual medical case, each patient must be examined and advised individually, and this document does not replace the need for such examination and/or advice in whole or in part.

**Caution:** Federal (USA) law restricts this device to sale by or on the order of a physician. Rx Only. Please refer to the package inserts for important product information, including, but not limited to, indications, contraindications, warnings, precautions, adverse effects, and patient counseling information.

©2023 ZimVie Spine, Inc. All rights reserved.

All content herein is protected by copyright, trademarks and other intellectual property rights, as applicable, owned by or licensed to ZimVie Spine, Inc. or its affiliates unless otherwise indicated, and must not be redistributed, duplicated or disclosed, in whole or in part, without the express written consent of ZimVie Spine. This material is intended for health care professionals, the ZimVie Spine sales force and authorized representatives. Distribution to any other recipient is prohibited. ZV0906-REV0523

Changing the game  
in MIS TL fixation



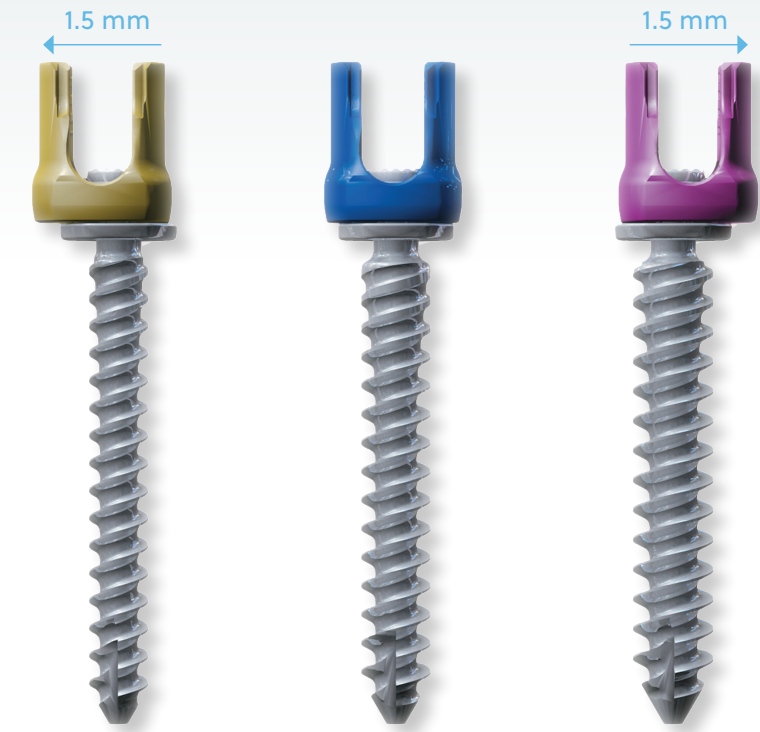
**Cypher™**  
MIS Screw System

**ZimVie**



## Game Changing Technology

### 3.0 MM OF MEDIAL-LATERAL SCREW TRANSLATION



Left Translation

Center

Right Translation

The Cypher MIS Screw System features the revolutionary Translation™ Screw Technology. Unique in the marketplace, this technology provides the surgeon with an added level of variability and flexibility. Translation Screw Technology provides 3 mm of medial-to-lateral variability allowing the screw to be placed anatomically. The translating screw head encourages more optimal screw placement and facilitates easier rod passage.

#### Translation Screw Technology

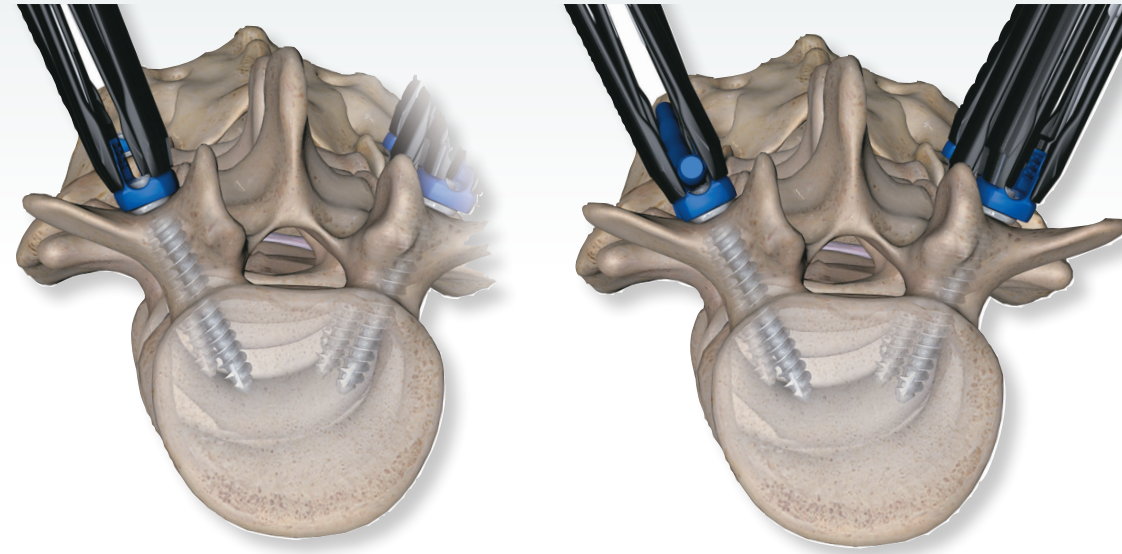
- 3.0 mm of medial-lateral translation encourages optimal screw placement
- Less rod manipulation, easier rod introduction

#### Versatile Instrumentation

- Robust implant interface instills confidence throughout the procedure
- Powerful rod reducers support controlled, sequential rod reduction

#### Less Stress at Bone-to-Screw Interface

Combining Minimally Invasive techniques with translating screw heads provides the surgeon with a unique first-to-market implant that allows for optimal screw placement and reduces the amount of rod manipulation necessary during rod placement.



## Features

- Robust locking mechanism (Helical Flange® Technology)
- First-in-class, all-in-one reduction instrumentation
- Translation Screw Technology
- Strong screw-to-tower connection

## Benefits

- Minimizes cross threading and seat splay
- Eliminates a step in the procedure while improving procedural efficiency
- Less rod manipulation
- Instills confidence to the surgeon that the screw is secure and will not disengage intraoperatively



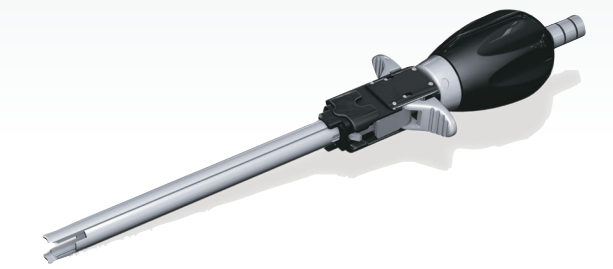
## Versatile Instrumentation

The Cypher System's intelligent instrument set has the singular design rationale of ensuring robust, tactile connections to the implants to instill confidence. The screw towers attach to the screws via a simple push motion, with a secondary locking mechanism to prevent intra-operative release.



#### Screw Towers

Screw Towers provide a robust and reliable connection to the Cypher Translation Screw.



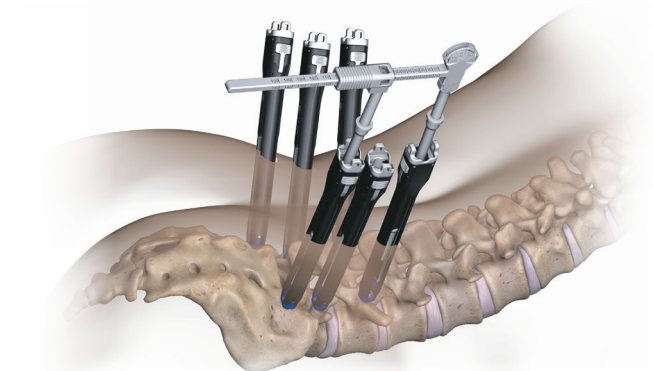
#### Rod Reducers

Rod Reducers are captured within the screw tower to provide up to 20 mm of reduction, improving procedural efficiency with less rod manipulation.



#### Rod Inserters

Bayonet Rod Inserters provide a robust connection to the implant for excellent tactile feel.



#### Rod Caliper

Intuitive Rod Caliper instills confidence with accurate measurement of rod length.